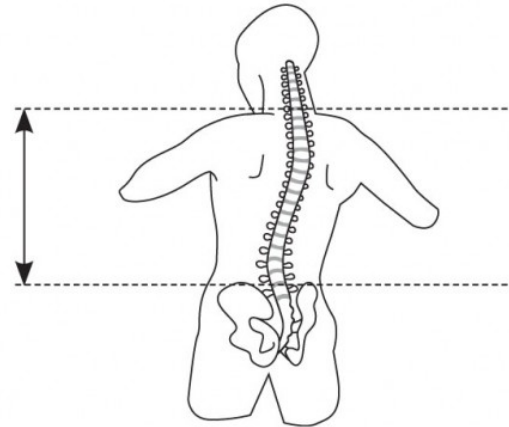




PACK SIZING INFORMATION



The Original Andinista



Measuring your Torso for Pack Size Selection

To choose the appropriate sized pack by Wild Things, take a measuring tape and have someone help you take a reading. On your back, measure from your neck bone to your waste (belt line), see diagram above. Choose the pack size closest to your measurement.

NOTE: *Sizing in this method ensures a better fit, than by just making a judgment of size by your height alone. There is a "range" of torso lengths in persons with the exact same height, thus it is advantageous to measure for your pack fit in this way.*

Pack Size	S	M	L
Torso Length	18"	19.5"	21"

In the case of the **Wild Things Guide Pack**, it is made in a one size fits "most" only. The torso size on the Guide Pack is in the Medium (19.5") range, but will work well with climbers up to 6', as the pack is smaller in capacity, thus the weight you would generally be carrying. The Guide pack is intended for fast and light assault alpine climbing, skiing, where generally speaking, your pack will be as light as possible, thus not requiring an exact torso fit.